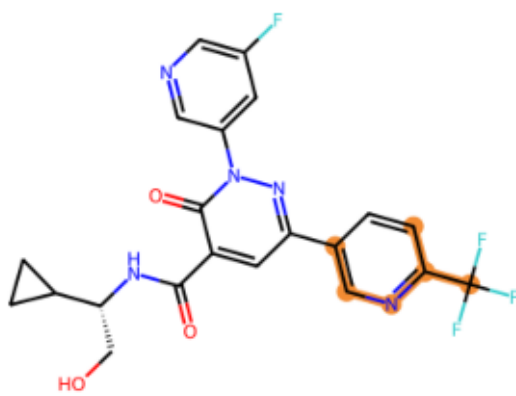
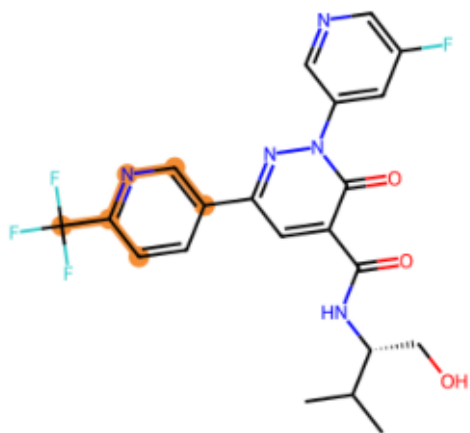


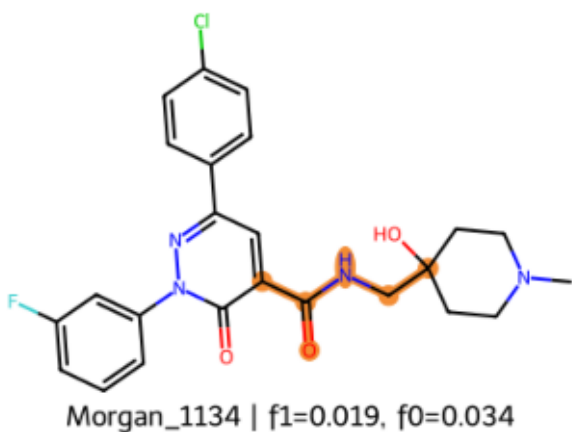
Only-inactive Morgan bits (highlighted Morgan bit environments)
Threshold $\geq 2\%$, Morgan radius=2, nBits=2048 — page 1/5



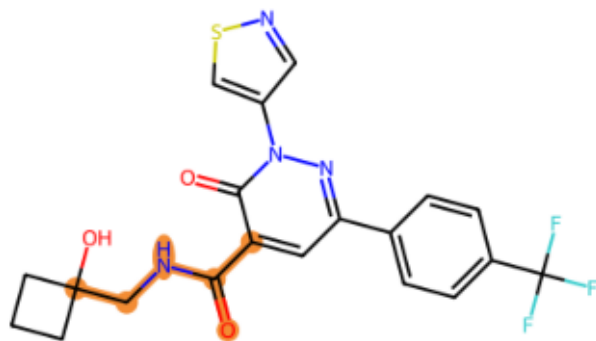
ex1



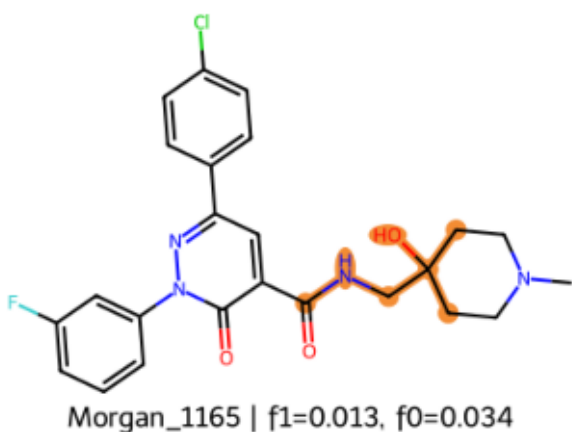
ex2



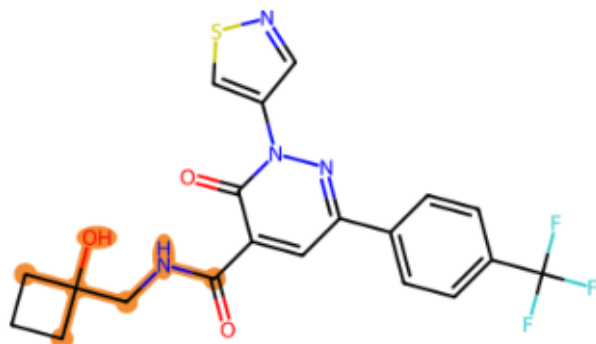
ex1



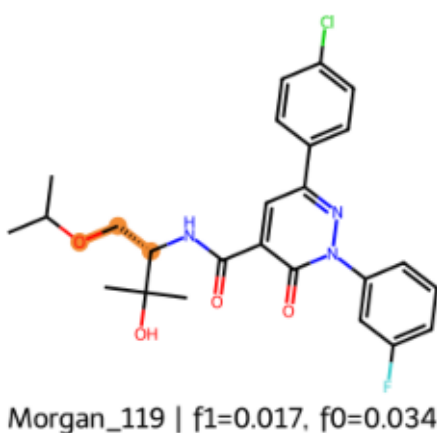
ex2



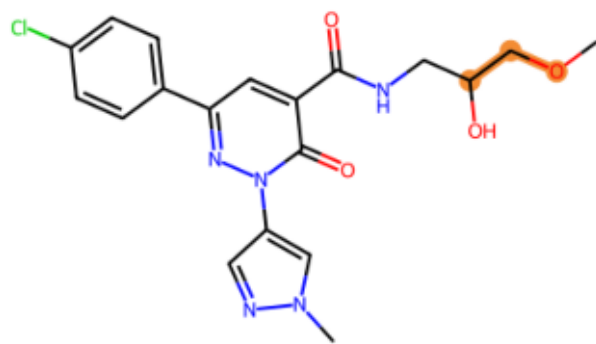
ex1



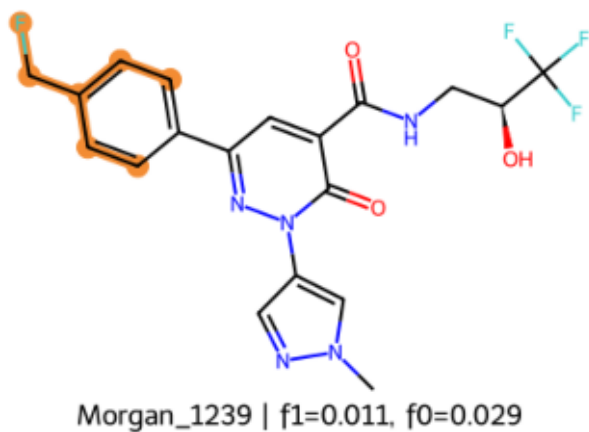
ex2



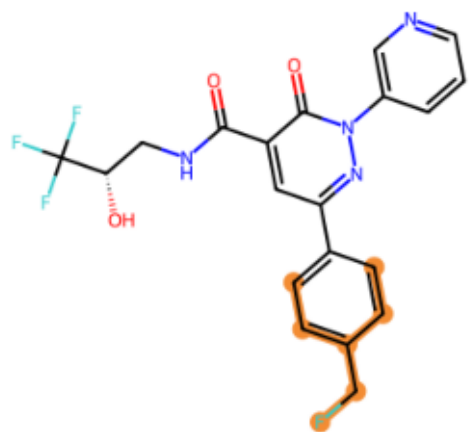
ex1



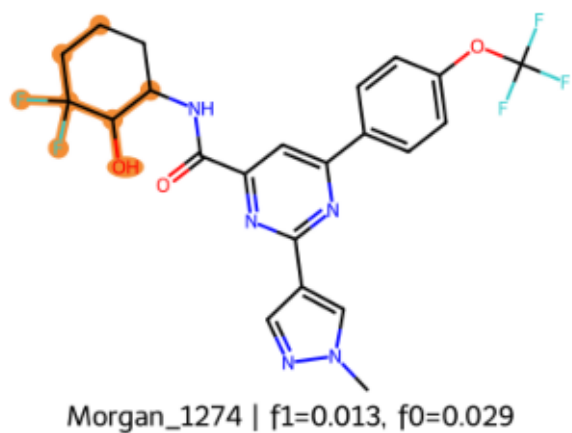
ex2



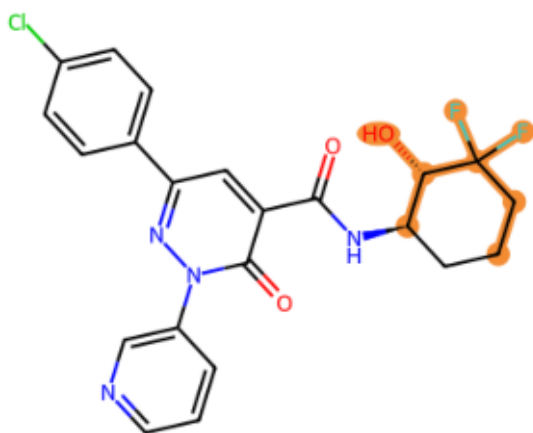
ex1



ex2

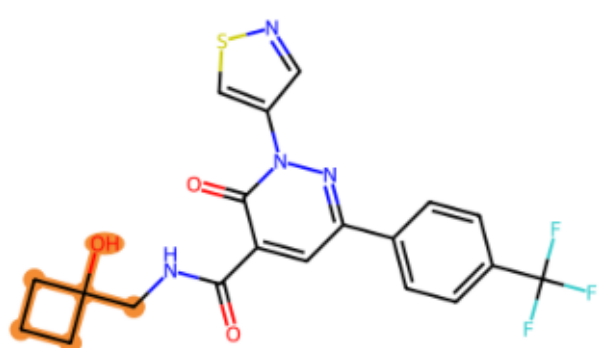


ex1



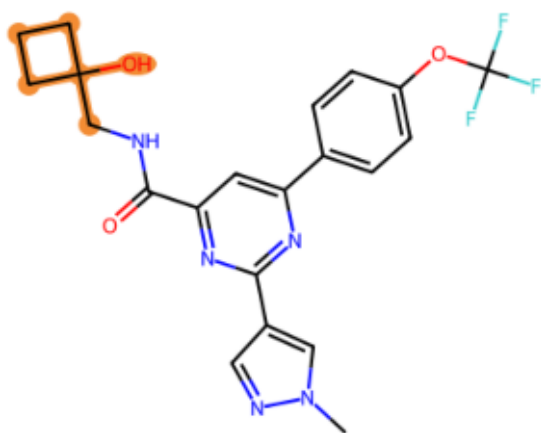
ex2

Only-inactive Morgan bits (highlighted Morgan bit environments)
Threshold $\geq 2\%$, Morgan radius=2, nBits=2048 — page 2/5

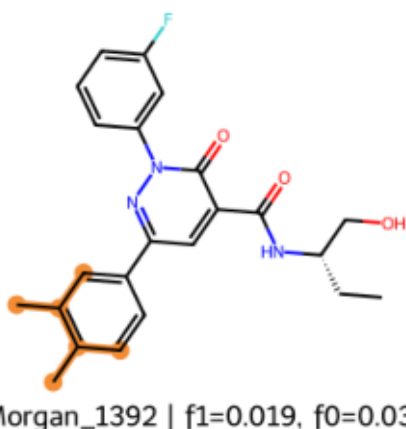


Morgan_1291 | f1=0.013, f0=0.029

ex1

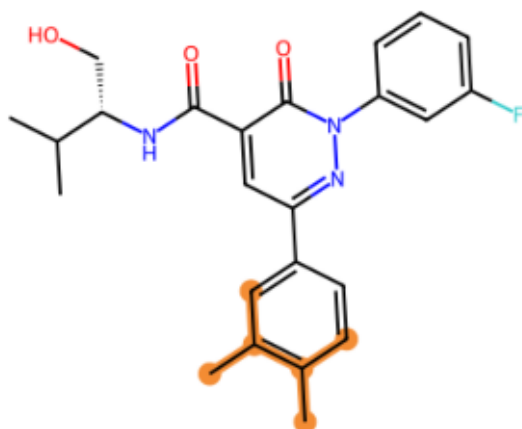


ex2

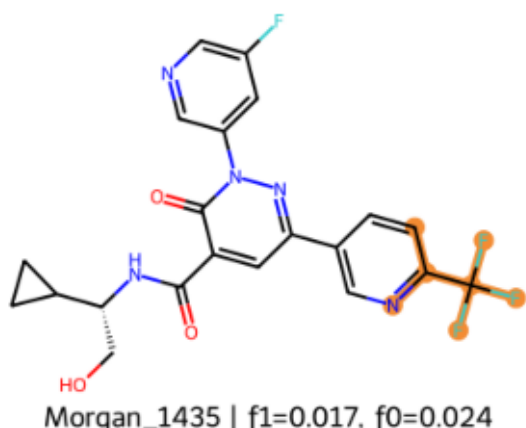


Morgan_1392 | f1=0.019, f0=0.034

ex1

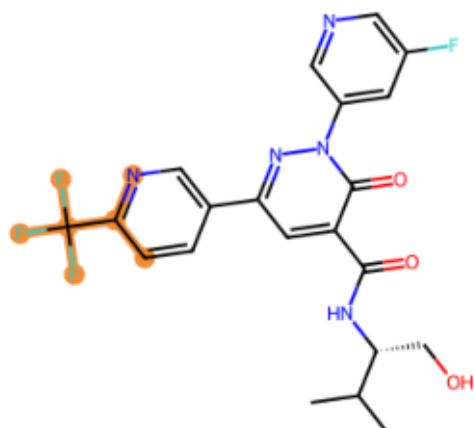


ex2

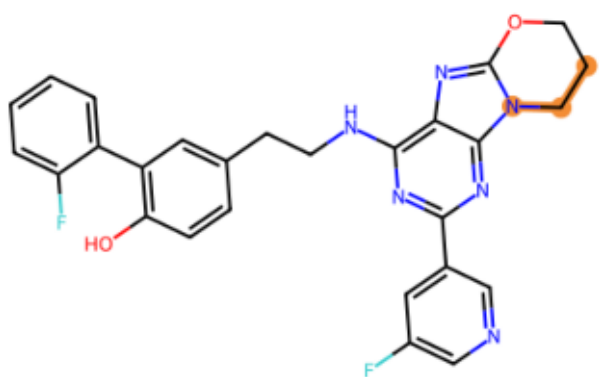


Morgan_1435 | f1=0.017, f0=0.024

ex1

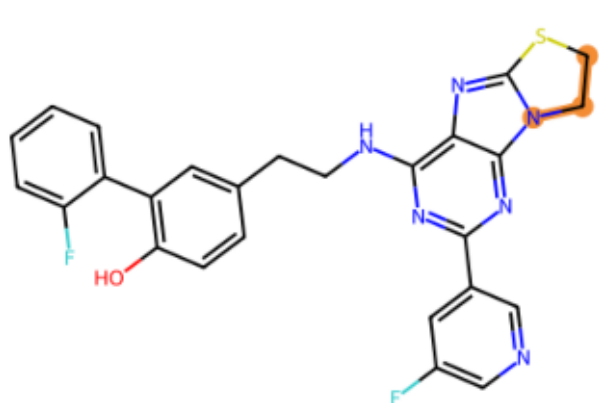


ex2

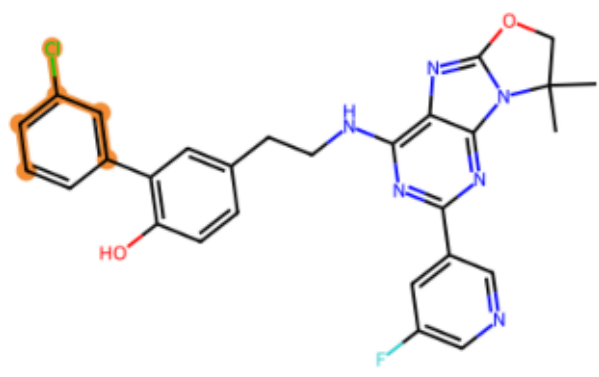


Morgan_1481 | f1=0.007, f0=0.024

ex1

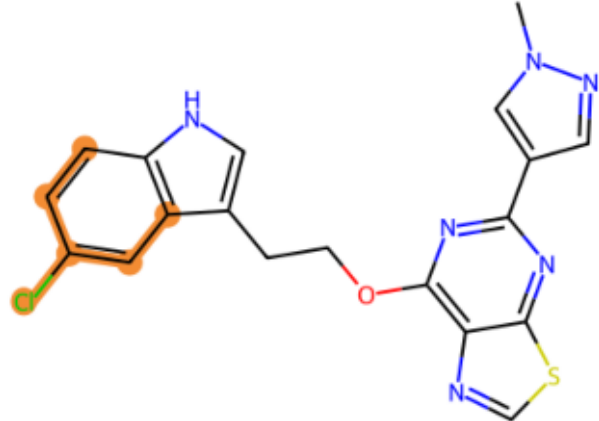


ex2

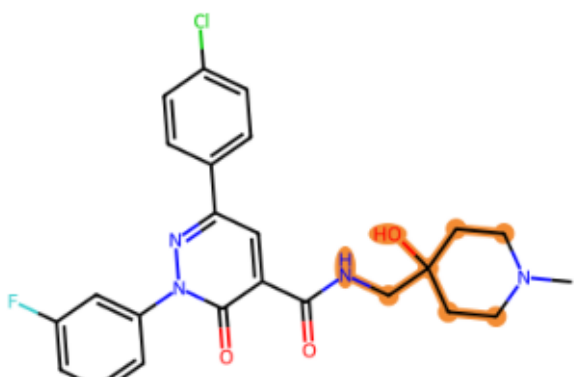


Morgan_166 | f1=0.015, f0=0.039

ex1

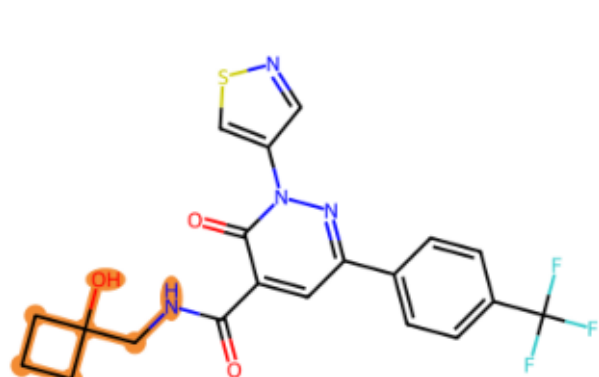


ex2



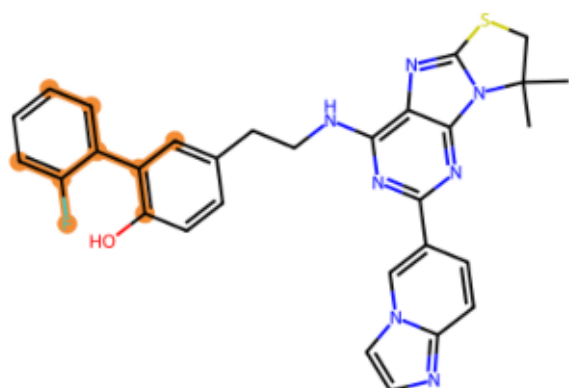
Morgan_1699 | f1=0.011, f0=0.034

ex1



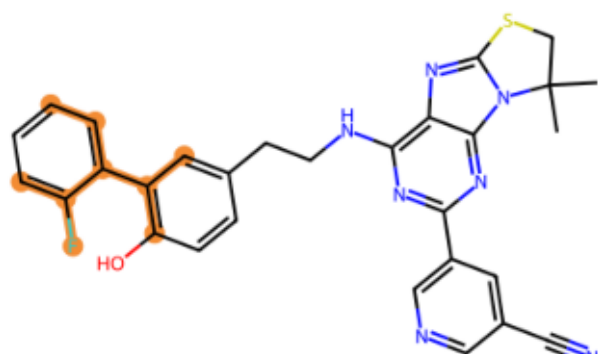
ex2

Only-inactive Morgan bits (highlighted Morgan bit environments)
Threshold $\geq 2\%$, Morgan radius=2, nBits=2048 — page 3/5

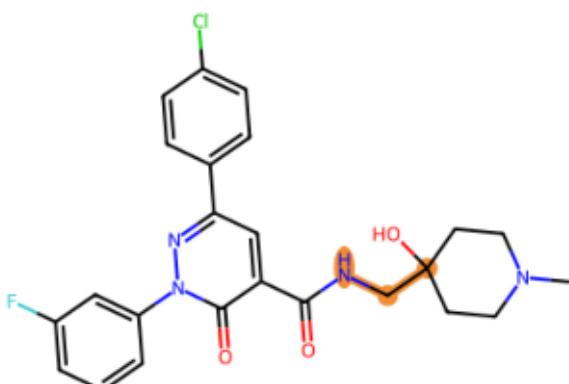


Morgan_171 | f1=0.015, f0=0.034

ex1

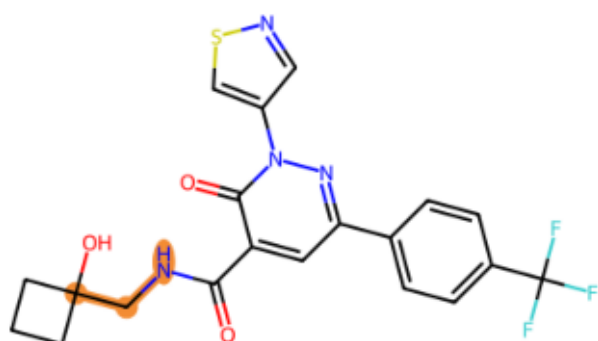


ex2

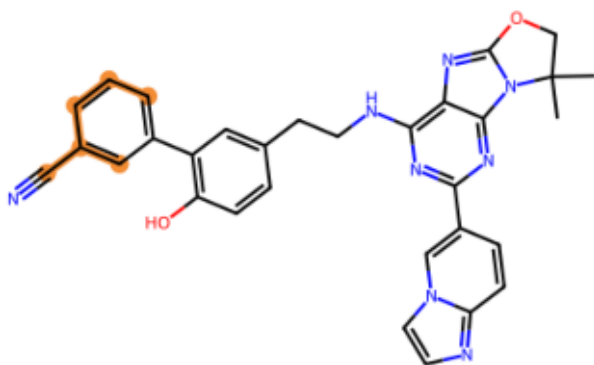


Morgan_1728 | f1=0.015, f0=0.034

ex1

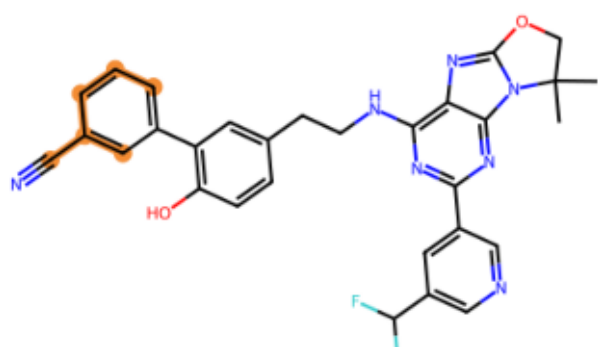


ex2

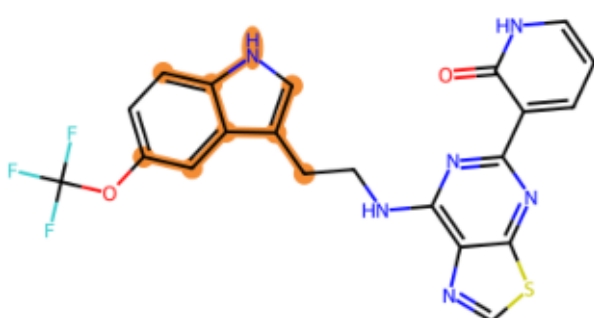


Morgan_1735 | f1=0.017, f0=0.029

ex1

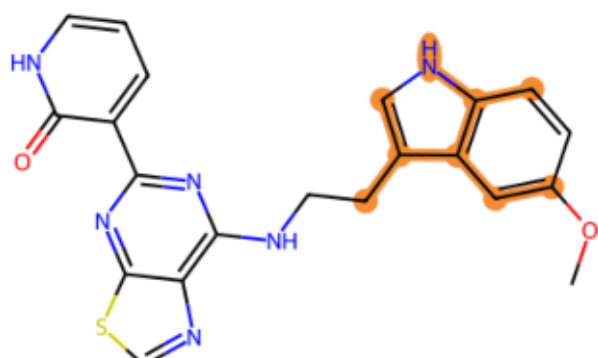


ex2

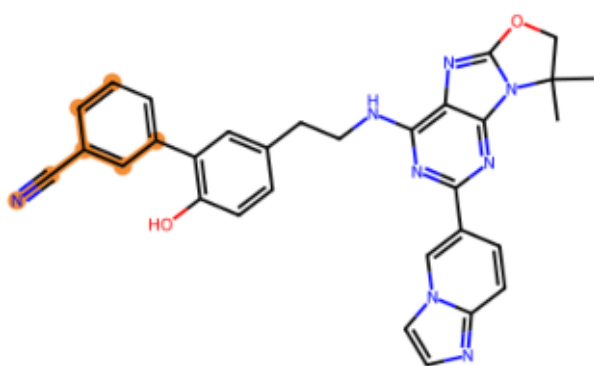


Morgan_1753 | f1=0.015, f0=0.024

ex1

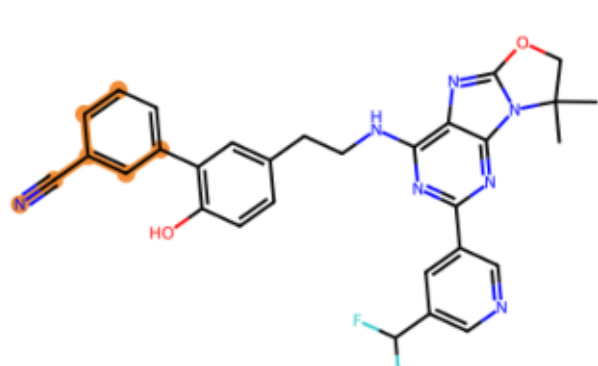


ex2

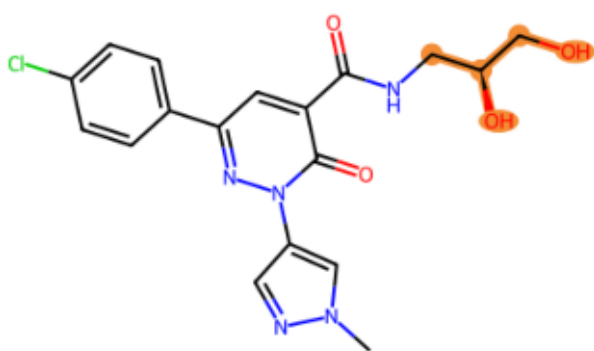


Morgan_1976 | f1=0.017, f0=0.029

ex1

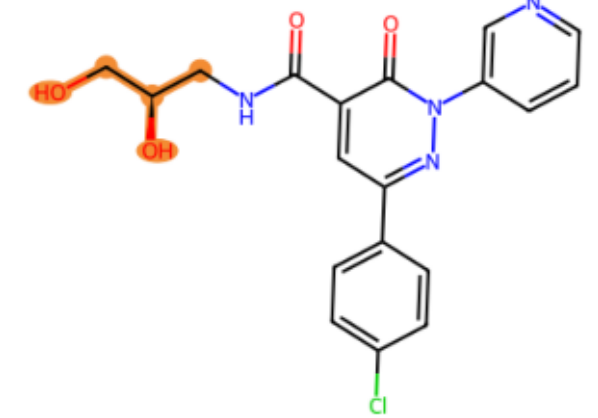


ex2



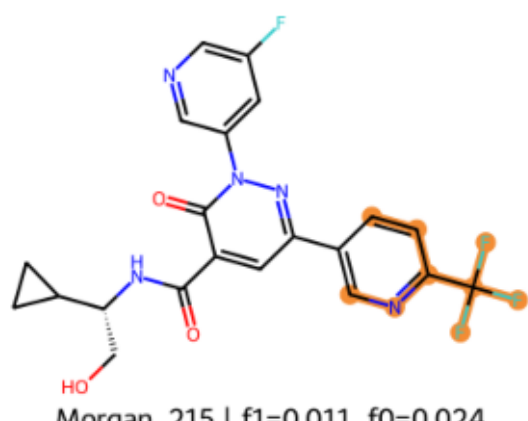
Morgan_1978 | f1=0.015, f0=0.024

ex1

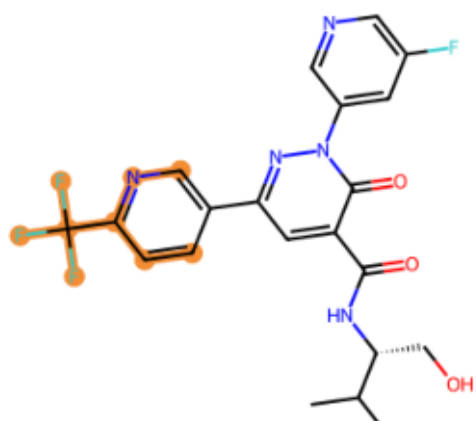


ex2

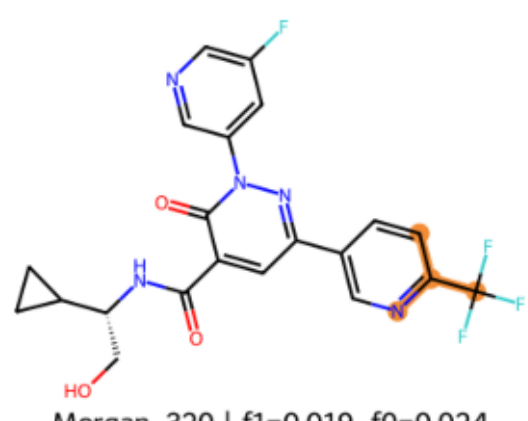
Only-inactive Morgan bits (highlighted Morgan bit environments)
Threshold $\geq 2\%$, Morgan radius=2, nBits=2048 — page 4/5



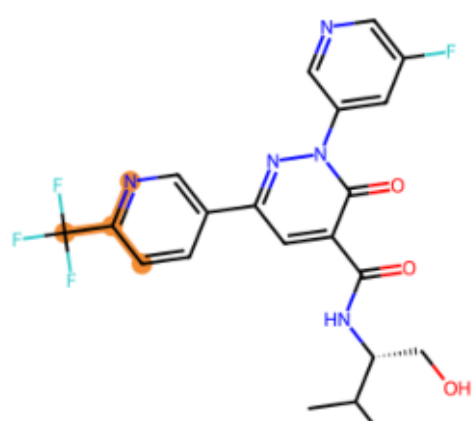
ex1



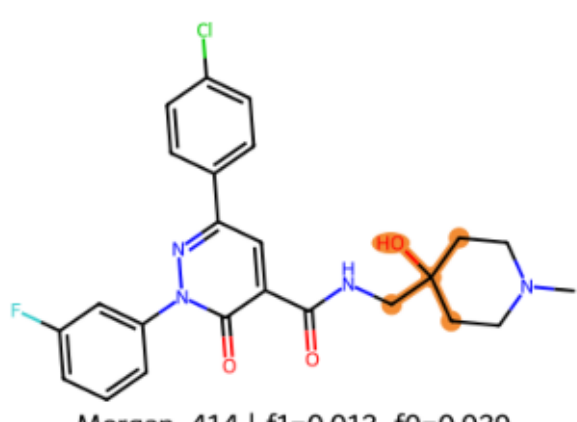
ex2



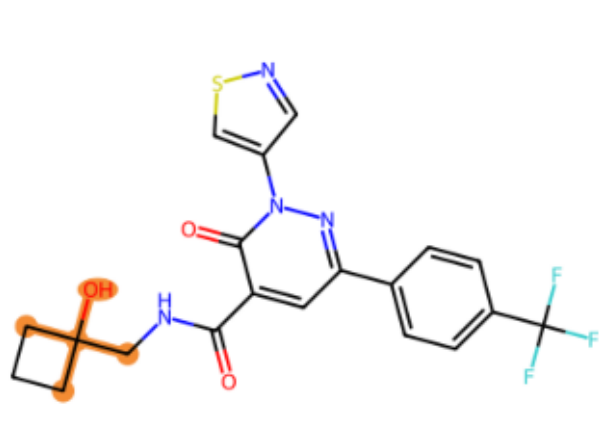
ex1



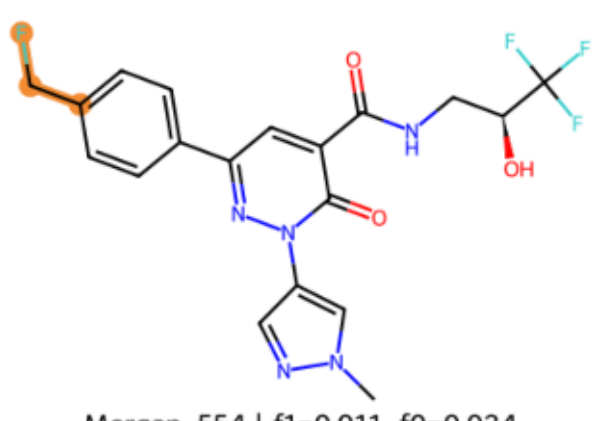
ex2



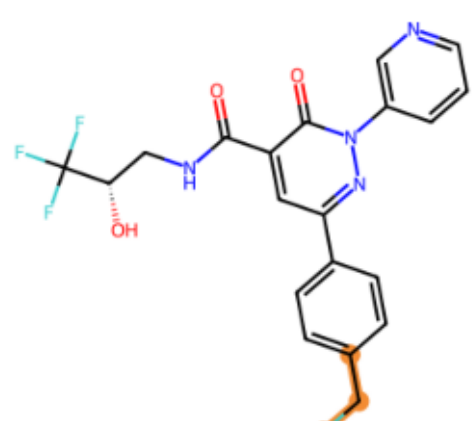
ex1



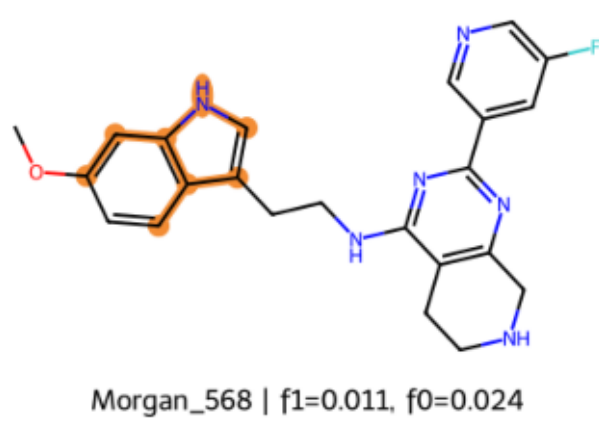
ex2



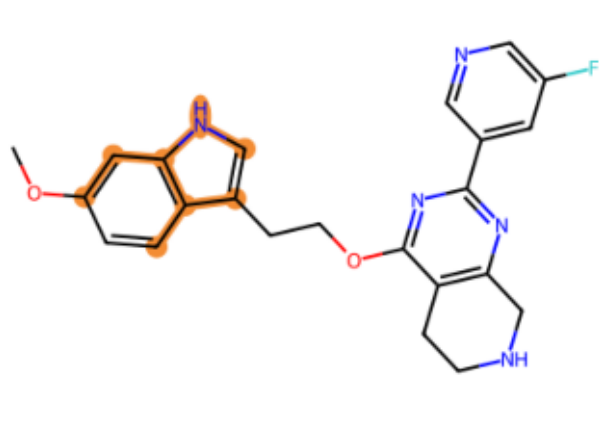
ex1



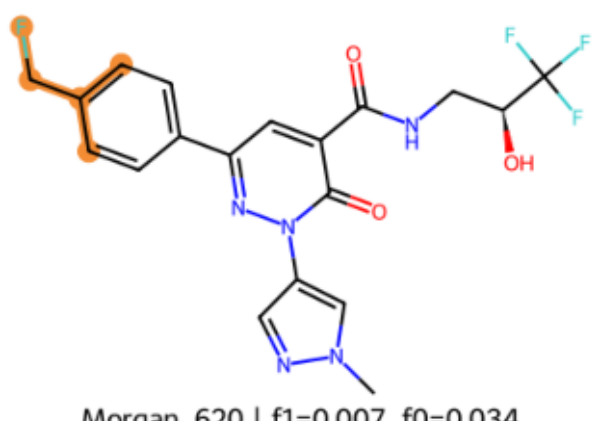
ex2



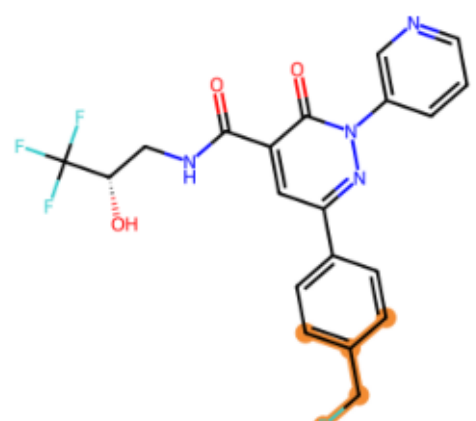
ex1



ex2

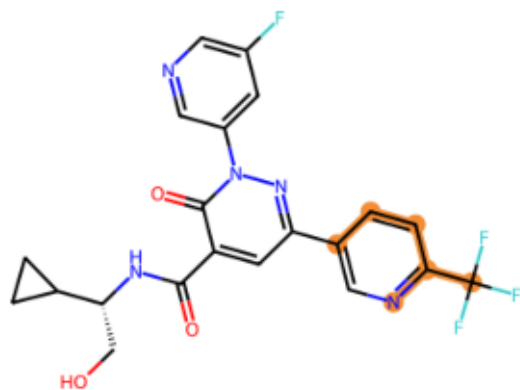


ex1



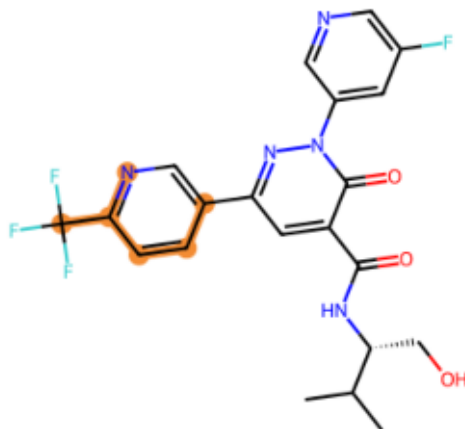
ex2

Only-inactive Morgan bits (highlighted Morgan bit environments)
Threshold $\geq 2\%$, Morgan radius=2, nBits=2048 — page 5/5

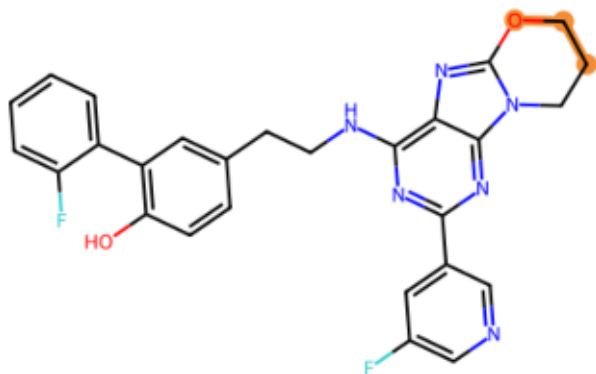


Morgan_716 | f1=0.013, f0=0.024

ex1

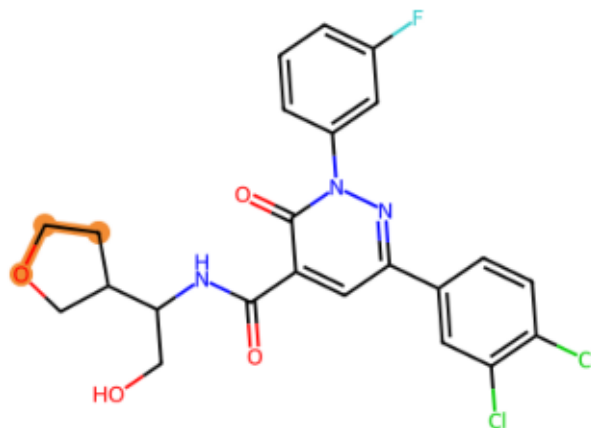


ex2



Morgan_951 | f1=0.019, f0=0.024

ex1



ex2